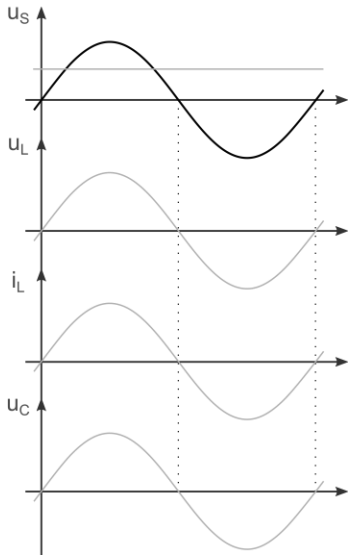
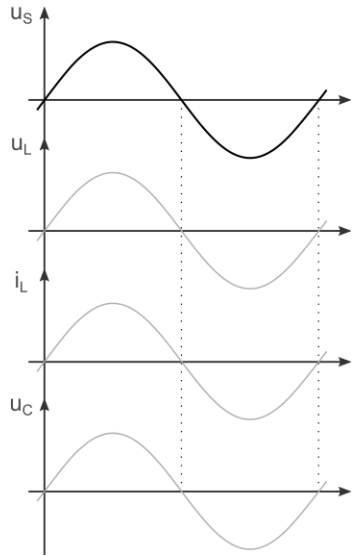
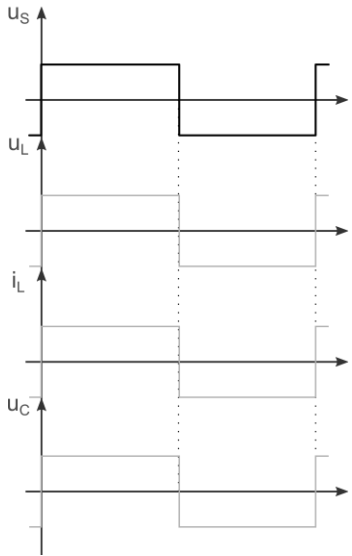
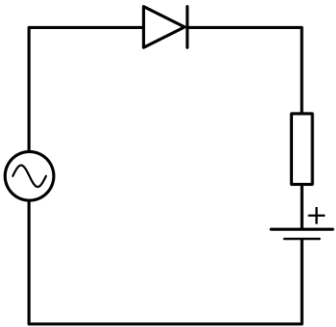
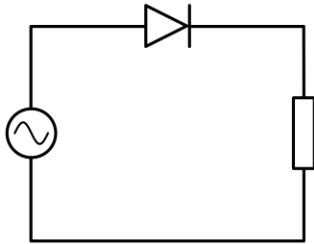
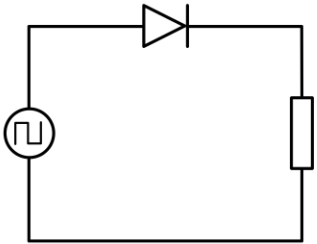


Elementary circuits 1

- How circuits with uncontrollable devices behave?
- How circuits with semi-controllable devices behave?

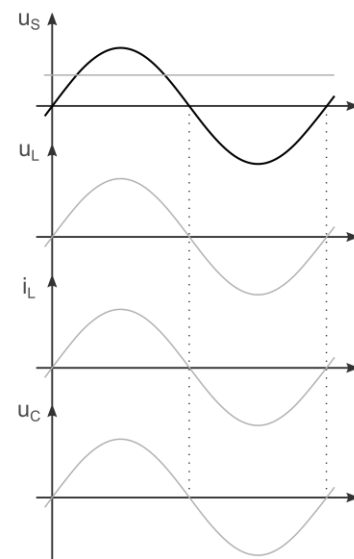
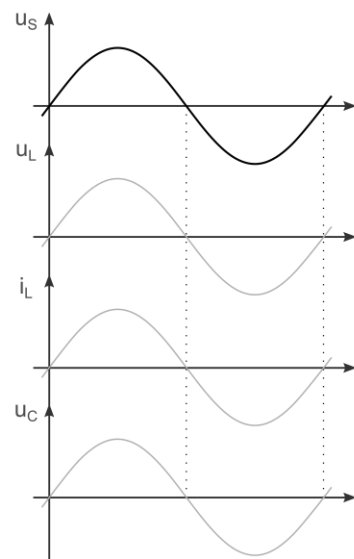
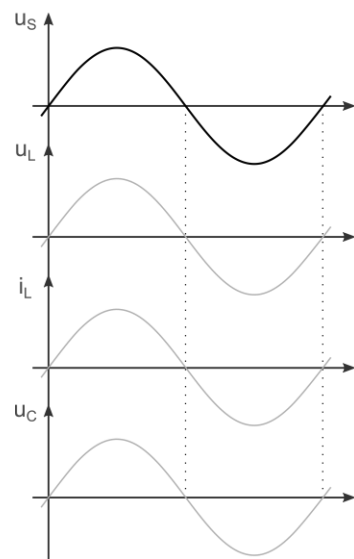
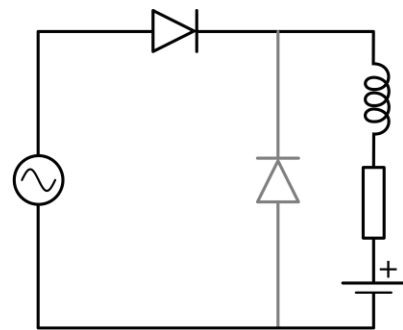
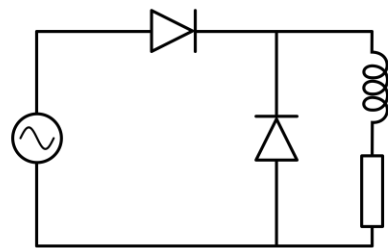
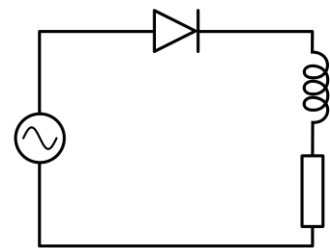
SEMICONDUCTOR DEVICES

Elementary diode circuits



SEMICONDUCTOR DEVICES

Elementary diode circuits



SEMICONDUCTOR DEVICES

Elementary thyristor circuits

